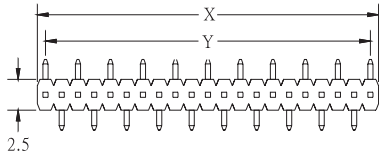


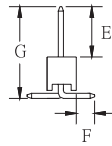
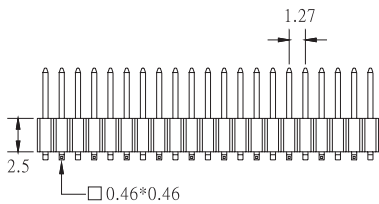
# C45

## PIN HEADER SINGLE ROW SMT TYPE STRAIGHT (H:2.5mm)

PITCH:1.27mm



|   |                        |
|---|------------------------|
| X | 1.27*POSITION NO.      |
| Y | 1.27*(POSITION. NO.-1) |



|   |                                |
|---|--------------------------------|
| 1. NO. OF CONTACT   | 2. CONTACT MATERIAL            |
| 02 TO 50  | A: BRASS<br>B: PHOSPHOR BRONZE |
| 3. CONTACT PLATING  | 4. INSULATOR COLOR             |
| T: TIN PLATED<br>S: SELECTIVE<br>G: GOLD FLASH<br>A: 5u" INCH GOLD<br>B: 10u" INCH GOLD<br>C: 15u" INCH GOLD<br>D: 30u" INCH GOLD | 1. BLACK                       |
| 5. PIN LENGTH   |                                |
| E / F / G   |                                |

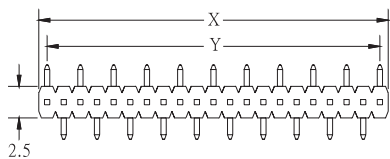
### HOW TO ORDER:

C45 -  -  -  -  -

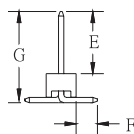
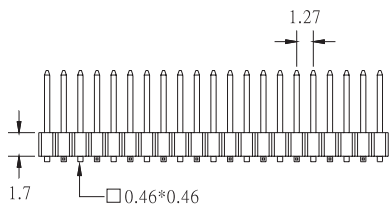
# C45a

## PIN HEADER SINGLE ROW SMT TYPE STRAIGHT (H : 1.7mm)

PITCH: 1.27mm



|   |                        |
|---|------------------------|
| X | 1.27*POSITION NO.      |
| Y | 1.27*(POSITION. NO.-1) |



|   |                                |
|---|--------------------------------|
| 1. NO. OF CONTACT   | 2. CONTACT MATERIAL            |
| 02 TO 50  | A: BRASS<br>B: PHOSPHOR BRONZE |
| 3. CONTACT PLATING  | 4. INSULATOR COLOR             |
| T: TIN PLATED<br>S: SELECTIVE<br>G: GOLD FLASH<br>A: 5u" INCH GOLD<br>B: 10u" INCH GOLD<br>C: 15u" INCH GOLD<br>D: 30u" INCH GOLD | 1. BLACK                       |
| 5. PIN LENGTH   |                                |
| E / F / G   |                                |

### HOW TO ORDER:

C45a -  -  -  -  -