

# B06i

## ELEVATED FEMALE HEADER TRIPLE ROW PROFILE : 8.4mm STRAIGHT

PITCH: 2.54mm

### SPECIFICATIONS

#### Material

Insulator : PBT, glass reinforced, rated UL 94V-0

Contact : Phosphor Bronze or Brass

#### Electrical

Current Rating : 1 Amp

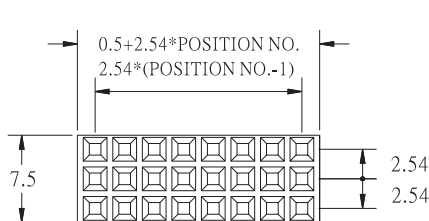
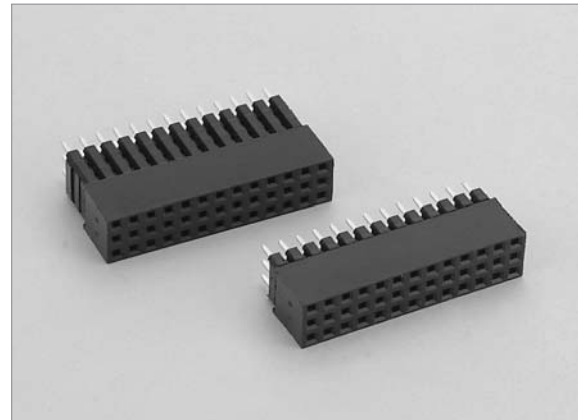
Contact Resistance : 30 mΩ max.

Insulation Resistance : 3000 MΩ min.

Dielectric Withstanding Voltage : 500V AC for 1minute

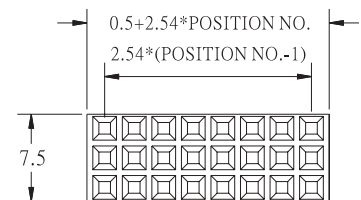
Operating Temperature : -40°C to +105°C

◆ Mating Suggestion : C21 & C22 series.

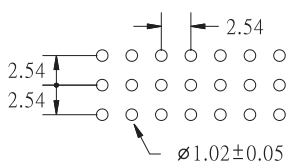
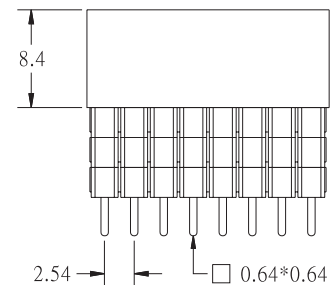
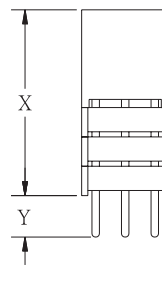
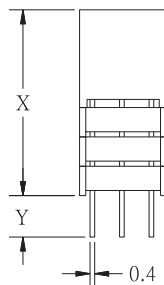
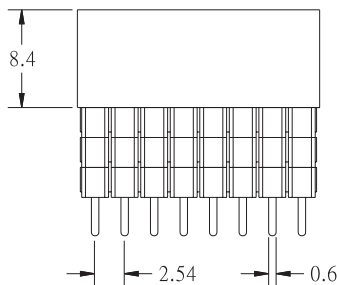


(TYPE A)

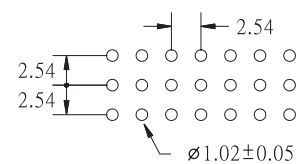
HEIGHT	X	Y
A	10.94	3.10
B	13.48	5.65
C	16.02	3.10



(TYPE B)



RECOMMENDED P.C.B LAYOUT



RECOMMENDED P.C.B LAYOUT

### HOW TO ORDER:

B06i -  -  -  -  -  -

1.NO. OF CONTACT	2.CONTACT MATERIAL	3.CONTACT PLATING	4.PIN TYPE	5.LEAD STYLE	6.INSULATOR COLOR
TRIPLE ROW 3*3 - 3*40	A: BRASS B: PHOSPHOR BRONZE	T: TIN PLATED S: SELECTIVE G: GOLD FLASH A: 5u" INCH GOLD B: 10u" INCH GOLD C: 15u" INCH GOLD D: 30u" INCH GOLD	A: TYPE A B: TYPE B	A: TYPE A B: TYPE B C: TYPE C	1. BLACK

B