

A31

SCA CONNECTOR IDC TYPE (FEMALE)

PITCH: 1.27mm

SPECIFICATIONS

Material

Insulator : PBT, glass reinforced, rated UL 94V-0

Contact : Phosphor Bronze

Electrical

Current Rating : 1 Amp

Contact Resistance : 30 mΩ max.

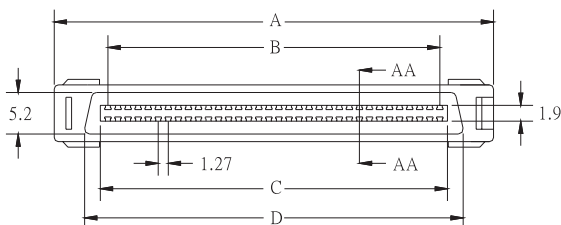
Insulation Resistance : 1000 MΩ min.

Dielectric Withstanding Voltage : 250V AC for 1minute

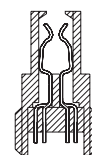
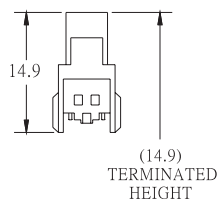
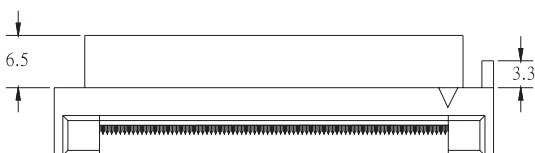
Operating Temperature : -40°C to +105°C

♦ Terminated with 0.635mm pitch flat ribbon cable.

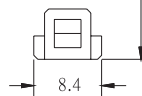
♦ Mating Suggestion : A30 & E28a series.



POSITION	A	B	C	D
20	24.10	11.43	13.40	16.90
30	30.45	17.78	19.75	23.25
40	36.80	24.13	26.10	29.60
50	43.15	30.48	32.45	35.95
60	49.50	36.83	38.80	42.30
68	54.58	41.91	43.88	47.38
80	62.20	49.53	51.50	55.00
100	74.90	62.23	64.20	67.70



SECTION AA-AA



HOW TO ORDER:

A31 - 1 - 2 - 3 - 4 - 5 - 6

1.NO. OF CONTACT	2.CONTACT TYPE	3.CONTACT MATERIAL
68 80	F: FEMALE	B: PHOSPHOR BRONZE
4.CONTACT PLATING	5.ACCESSORIES	6.INSULATOR COLOR
T: TIN PLATED S: SELECTIVE G: GOLD FLASH A: 5u" INCH GOLD B: 10u" INCH GOLD C: 15u" INCH GOLD D: 30u" INCH GOLD	A: W STRAIN RELIEF B: W/O STRAIN RELIEF	1. BLACK